

# SLE210K

## Miniature Power Rocker Switches

Dust Proof

C-US UL VDE SEMKO

RoHS Compliant



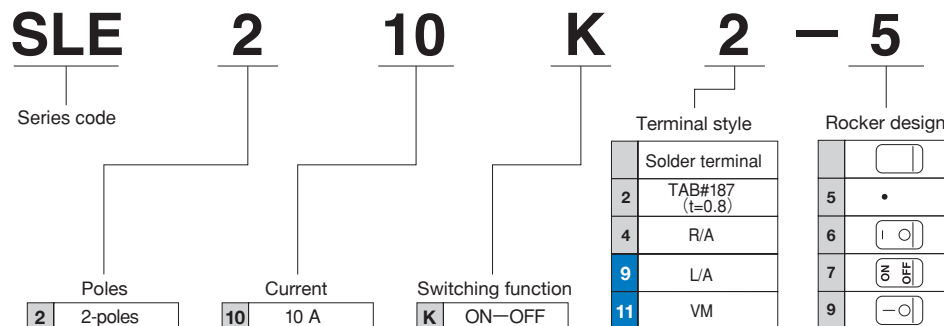
### Features

1. C-US UL , VDE and SEMKO approved products
2. Snap-in panel mounting
3. Compact size is suited for space-saving design.
4. Best suited for power supply of equipment.
5. Dust-proof type
6. 100 A rush current type.
7. Breaking distance is 3 mm or over.

### Specifications

Rating	Load	Inductive load				Resistive load
	Inrush current (p.f.=0.6)	125VAC		250VAC		10A 125VAC 10A 250VAC (p.f.=1.0)
		100A	60A	100A	60A	
	Break current (p.f.=0.9)	10A	10A	10A	10A	
	Min.	10mA 5VAC/DC				(Resistive load)
	C-ULUS	6A 125VAC·6A 250VAC				(Resistive load)
Initial contact resistance		20mΩ max.				(1A 1~2VDC)
Initial dielectric strength		1500VAC 1 minute				
Initial insulation resistance		100MΩ min				(500VDC)
Electrical life(cycles)		5,000	10,000	5,000	10,000	10,000
Operating force		3.92~12.7N				
Operating temperature range		-25~+85°C				
Storage temperature range		-40~+85°C				

### Part Numbering



★   : The combination marked in blue brackets shows made-to-order products.

### Marking Color

Frame color · Rocker color	Making color
Black	White

7The black color is standard for the frame and the rocker.  
The gray and the ivory colors are also available as custom-made items.

### Handling Precautions

#### 1. Soldering Specifications

##### (1) Manual Soldering

Device : Soldering iron

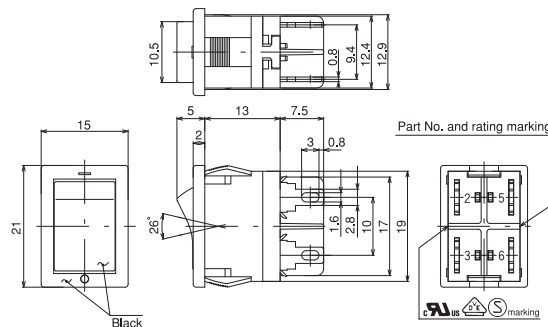
380°C, Max.; 5 seconds, Max.

The tab terminals cannot be soldered.

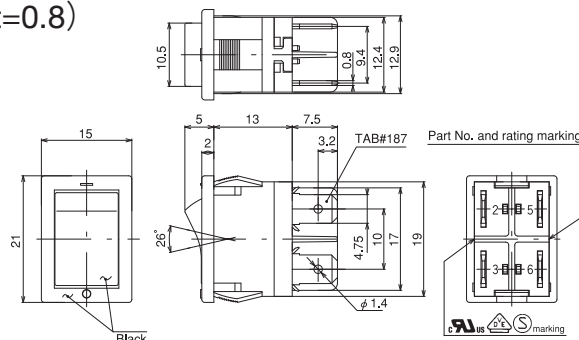
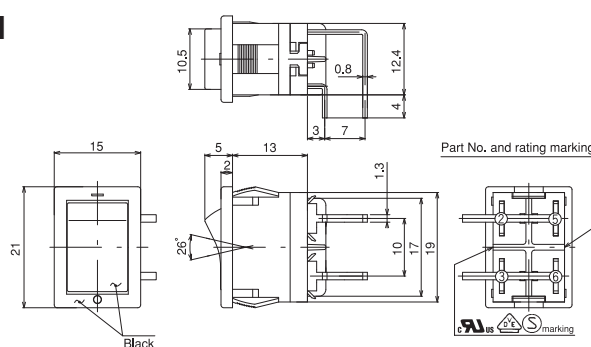
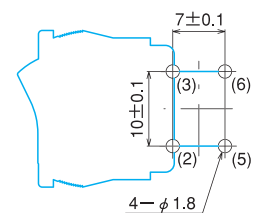
**SLE210K****Table of Part Numbers**

Frame color and rocker color	Marking color	Switching function	Terminal styles	Part number and rating marking side				
Black	White	ON—OFF	Solder terminal	☆SLE210K	★SLE210K-5	SLE210K-6	★SLE210K-7	SLE210K-9
			#187 TAB	SLE210K2	SLE210K2-5	SLE210K2-6	SLE210K2-7	SLE210K2-9
			Right-angle	★SLE210K4	★SLE210K4-5	☆SLE210K4-6	★SLE210K4-7	▲SLE210K4-9
			Left-angle	▲SLE210K9	★SLE210K9-5	★SLE210K9-6	★SLE210K9-7	★SLE210K9-9
			Vertical mounting	▲SLE210K11	▲SLE210K11-5	★SLE210K11-6	☆SLE210K11-7	▲SLE210K11-9

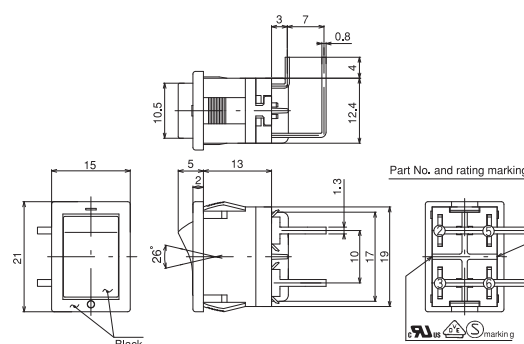
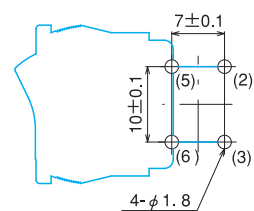
●For custom-made products, we accept orders for indication of letters, codes, etc., on the top surface of rocker.

**Solder terminal**

Switching function	Viewed from part No. & rating marking side	
	ON	OFF
Part No.	ON	OFF
Connecting terminals	2—3 5—6	—

**TAB#187 Terminal (t=0.8)****Right Angle Terminal****PC Hole Layouts (Top view)**

The blue lines show the outline of the switch.

**Left Angle Terminal****PC Hole Layouts (Top view)**

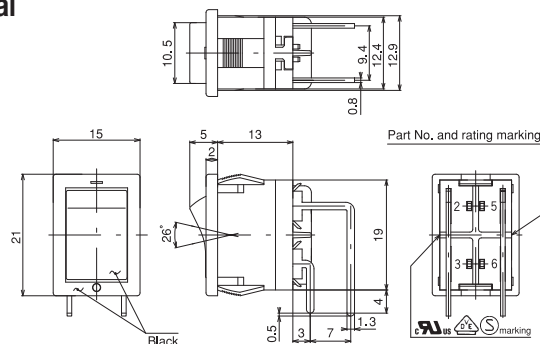
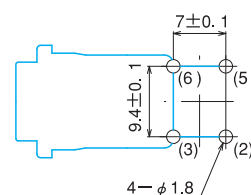
The blue lines show the outline of the switch.


▲ : Inquiry products.

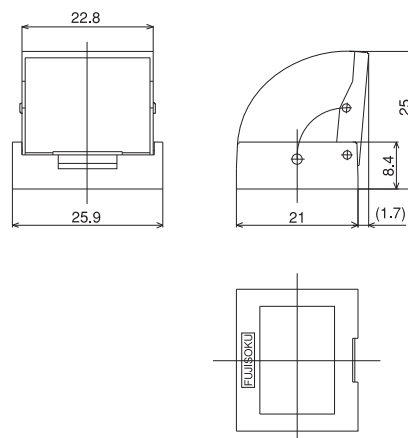
☆ : Semi-standard products.

★ : Made to order products.

●Terminal numbers are shown on the bottom of the switch.

**SLE210K****Vertical Mounting Terminal****PC Hole Layouts (Top view)**

 The blue lines show the outline of the switch.

**Switch Guard****Dedicated for use of rocker switches****Features**

Clear visibility and one-touch mounting to save labor

**Application**

Best suited for protection of malfunction of miniature rocker switches (panel cutout: 19.2 x 12.9)

**Specifications**

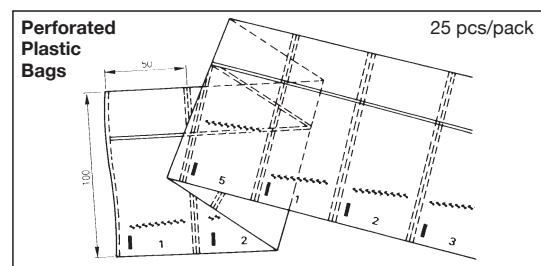
Part Name: Switch guard

Part Number: 140007250027

Color: Black (transparent cover)

An application switch	● SLE6	● SLE10
	● SL10K	● SLE210K

※The switch guard cannot be used for the SLE10K type.

**Packaging Specification****Approvals**

UL File No.E43275

VDE License No. 40000090

SEMCO File No. 1312457

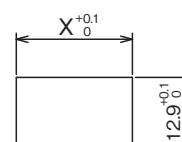
**Panel Cut-Out Dimensions**

Switches

Panel thickness	X
0.75~1.25	19.2
1.25~2.0	19.4
2.0~3.0	19.8

Switch Guard Installation

Panel thickness	X
0.75~1.4	19.4
1.4~2.3	19.8

**PRECAUTIONS FOR PANEL MOUNTING**

Page ..... 314