

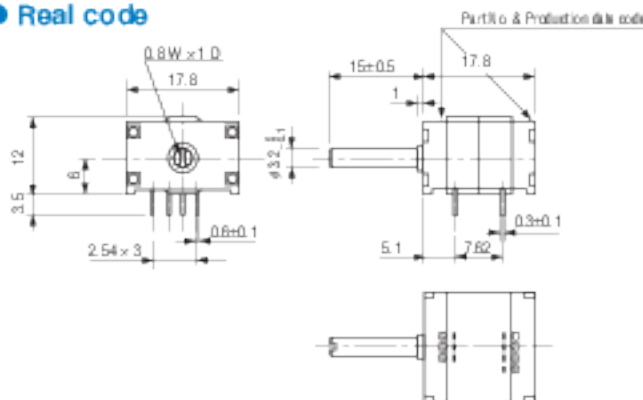
RD

ROTARY CODED SWITCHES

OUTLINE DIMENSIONS

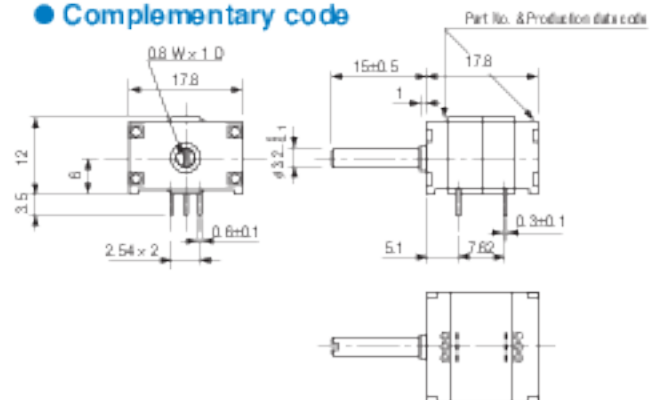
Unless otherwise specified, tolerance: ± 0.3 (Unit: mm)

Real code



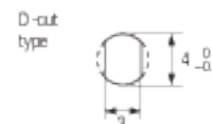
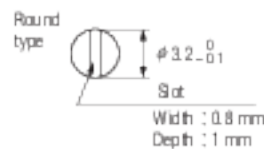
The above shows when a shaft is fully turned to CCW direction.

Complementary code



The above shows when a shaft is fully turned to CCW direction.

Diameter of shaft



TERMINAL CONNECTION / P.C.B. THROUGH HOLE DIMENSIONS

(Unit: mm)

	Real code	Complementary code
Terminal pin layout (Bottom view)		
P.C.B. dimensions (Bottom view)		

PACKAGING SPECIFICATIONS

- Boxing is performed with 20 pcs. per box.
- Order will be accept for unit of 20 pcs., ie., 20, 40, 60pcs., etc.

Note: The conventional knob (Round shaft, $\phi 3.2$ mm) available in the market such as the one in the picture can be used.



The DIP-TYPE ROTARY CODED SWITCHES RD series listed here are standard versions, but our production will be made upon receipt of your order.