

ES

Miniature Slide Switches

RoHS Compliant



Part Numbering

ES

1

15

A

12

—

Z

●Series code

●Number of poles

●Current

●Switching function

●Terminal styles

1	1 pole
2	2 poles

1 pole	2 pole	Switching function
A	K	OFF — ON
D	N	ON — ON
E	P	ON—OFF—ON

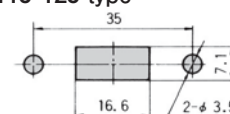
None	#250 Tab terminal
10	Screw terminal
12	Solder terminal

Terminal Styles

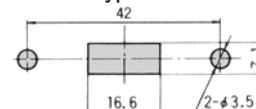
TAB#250 (Style : —)	Screw (Style : 10)		Solder (Style : 12)
	M3.5	M4.5	
	ES115•215 type (15A type)	ES125•225 type (25A type)	

Panel Cut-Out Dimensions

●ES115•125 type

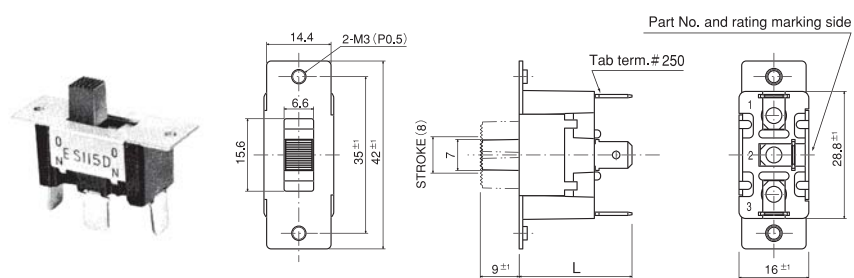


●ES215•225 type



ES115 1-pole

Switches with switching function "A" do not have terminal No. 2.



Terminal numbers are shown on the bottom of the switch.

Dimension L

Terminal style	TAB	Screw	Solder
Part No.			
ES115A ■—Z	25.2±1	—	22.3±1
ES115D ■—Z	25.2±1	—	22.3±1
ES115E ■—Z	25.7±1	—	22.8±1

Switching function	Viewed from part No. marking side		
Part No.			
ES115A ■—Z	OFF	—	ON
Connecting terminals	—	—	1—3
ES115D ■—Z	ON	—	ON
ES115E ■—Z	ON	OFF	ON
Connecting terminals	2—1	—	2—3

■To check the full part number of the products marked with the ■, please refer to "Table of Part Numbers" on P. 530.

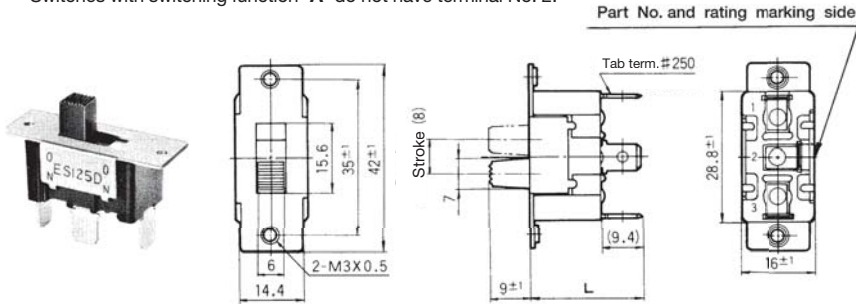
Specifications

Rating	Initial contact resistance	Dielectric strength	Insulation resistance	Electrical life
ES115A ■—Z ES115D ■—Z	20mΩ Max. (DC2~4V 100mA)	AC1500V 1minute	100MΩ Min. (DC500V)	20,000 cycles
ES115E ■—Z	AC125V 15A AC250V 7A			

ES

ES125 1—pole

Switches with switching function "A" do not have terminal No. 2.



■ Specifications

Terminal numbers are shown on the bottom of the switch.

Rating		Initial contact resistance	Dielectric strength	Insulation resistance	Electrical life
ES125A■—Z	AC125V 25A	20mΩ Max. (DC2~4V 100mA)	AC1500V minute	100MΩ Min. (DC500V)	20,000 cycles
ES125D■—Z	AC250V 25A				
ES125E■—Z	AC125V 25A AC250V 12A				

Dimension L

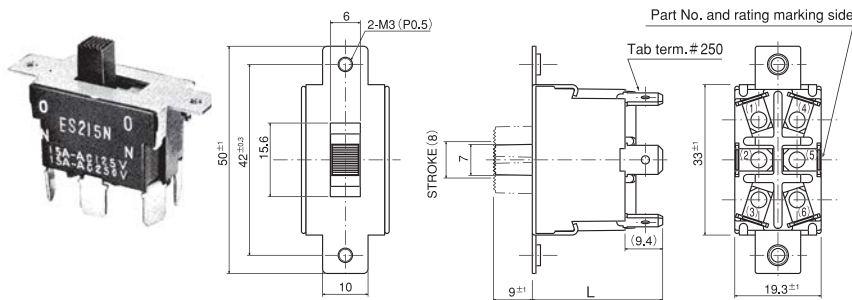
Terminal style	TAB	Screw	Solder
Part No.			
ES125A■—Z	25.2±1	26.4±1	22.3±1
ES125D■—Z			
ES125E■—Z	25.7±1	—	22.7±1

Switching function	Viewed from part No. marking side		
Part No.			
ES125A■—Z	OFF	—	ON
Connecting terminals	—	—	1—3
ES125D■—Z	ON	—	ON
ES125E■—Z	ON	OFF	ON
Connecting terminals	2—1	—	2—3

■ To check the full part number of the products marked with the ■, please refer to "Table of Part Numbers" on P. 530.

ES215 2—poles

Switches with switching function "K" do not have terminal No. 2 and No. 5.



■ Specifications

Terminal numbers are shown on the bottom of the switch.

Rating		Initial contact resistance	Dielectric strength	Insulation resistance	Electrical life
ES215K■—Z	AC125V 15A	20mΩ Max. (DC2~4V 100mA)	AC1500V 1minute	100MΩ Min. (DC500V)	20,000 cycles
ES215N■—Z	AC250V 15A				
ES215P■—Z	AC125V 15A AC250V 7A				

Dimension L

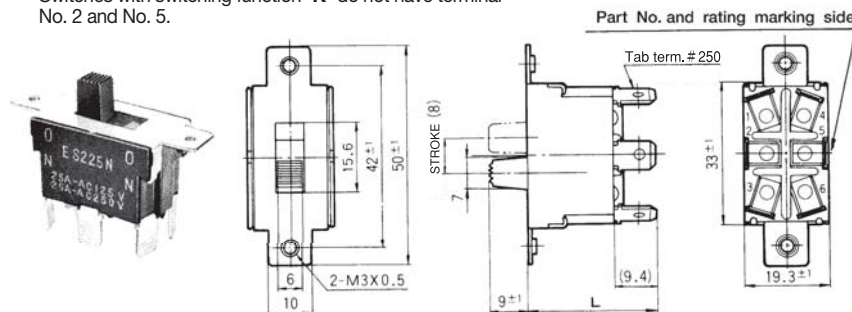
Terminal	TAB	Screw	Solder
Part No.			
ES215K■—Z	—	—	26.4±1
ES215N■—Z	29.3±1	27.1±1	
ES215P■—Z	—	—	

Switching function	Viewed from part No. marking side		
Part No.			
ES215K■—Z	OFF	—	ON
Connecting terminals	—	—	1—3 4—6
ES215N■—Z	ON	—	ON
ES215P■—Z	ON	OFF	ON
Connecting terminals	2—1 5—4	—	2—3 5—6

■ To check the full part number of the products marked with the ■, please refer to "Table of Part Numbers" on P. 530.

ES225 2—poles

Switches with switching function "K" do not have terminal No. 2 and No. 5.



■ Specifications

Terminal numbers are shown on the bottom of the switch.

Rating		Initial contact resistance	Dielectric strength	Insulation resistance	Electrical life
ES225K■—Z	AC125V 25A	20mΩ Max. (DC2~4V 100mA)	AC1500V minute	100MΩ Min. (DC500V)	20,000 cycles
ES225N■—Z	AC250V 25A				
ES225P■—Z	AC125V 25A AC250V 12A				

Dimension L

Terminal style	TAB	Screw	Solder
Part No.			
ES225K■—Z	—	—	26.4±1
ES225N■—Z	29.3±1	30.6±1	
ES225P■—Z	—	—	

Switching function	Viewed from part No. marking side		
Part No.			
ES225K■—Z	OFF	—	ON
Connecting terminals	—	—	1—3 4—6
ES225N■—Z	ON	—	ON
ES225P■—Z	ON	OFF	ON
Connecting terminals	2—1 5—4	—	2—3 5—6

■ To check the full part number of the products marked with the ■, please refer to "Table of Part Numbers" on P. 530.

■ indicates the terminal style number ("None", "10", or "12").

● For the soldering specifications and flux cleaning specifications, please refer to P. 525.