

# DRS•DRR<sup>7000C</sup><sub>8000C</sub>

Washable

## Hyper-Miniature Dip Rotary Switches (7.5mm sq.) 〔PC Mount〕



RoHS Compliant

### ■ Features

- 1. Hyper-miniature Size(7.5mm sq.)**  
Designed for high density mounting.
- 2. Process Sealed**
- 3. Gold Plated Contacts**
- 4. Clearly Visible Legends and Position Indicator**

### ■ Specifications

Rating	Switching	Max.	30mA 15VDC
		Min.	1μA 20mVDC
	Non-switching		100mA 50VDC
Contact resistance			100mΩ maximum
Dielectric strength			250VAC, 60s
Insulation resistance			1,000MΩ minimum (100VDC)
Load life			20,000 steps 30mA 15VDC
Operating torque			49mN·m [500gf·cm] maximum
Operating temperature range			−25~+85°C
Storage temperature range			−40~+85°C

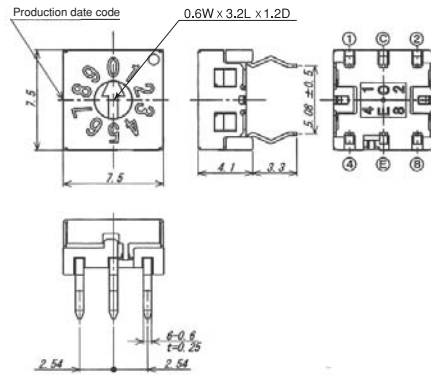
### ■ Part Numbering

DR	S	7	0	10	C
Series code	Terminals	Actuators	Circuits	Number of positions	Structure
<b>S</b> PC/Straight		<b>7</b> Screwdriver Actuator	<b>0</b> Real code	<b>10</b> 10 positions	
<b>R</b> Right angle		<b>8</b> Shaft Actuator	<b>1</b> Complementary code	<b>16</b> 16 positions	

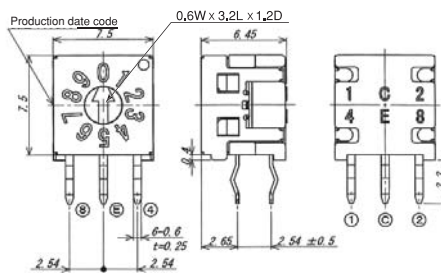
### ■ able of Part Numbers

		Actuators	Screwdriver Actuator		Shaft Actuator	
		Terminal style	PC Straight	Right-Angle	PC Straight	Right Angle
Circuit function	positions					
Real code	10		<b>DRS7010C</b>	<b>DRR7010C</b>	<b>DRS8010C</b>	★ <b>DRR8010C</b>
	16		<b>DRS7016C</b>	<b>DRR7016C</b>	<b>DRS8016C</b>	<b>DRR8016C</b>
Complementary code	10		<b>DRS7110C</b>	<b>DRR7110C</b>	★ <b>DRS8110C</b>	★ <b>DRR8110C</b>
	16		<b>DRS7116C</b>	<b>DRR7116C</b>	<b>DRS8116C</b>	★ <b>DRR8116C</b>

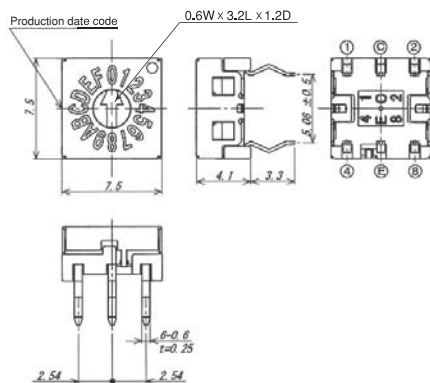
★ : Made-to-order products.

**DRS•DRR7000C** Washable**DRS7010C  
DRS7110C****Straight**

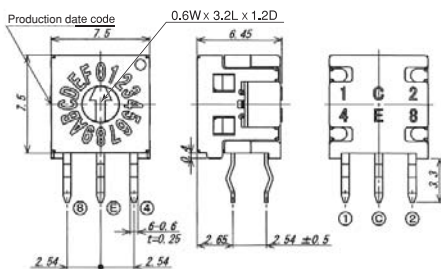
Terminal numbers are shown on the bottom of the switch.

**DRR7010C  
DRR7110C****Right Angle**

Terminal numbers are shown on the bottom of the switch.

**DRS7016C  
DRS7116C****Straight**

Terminal numbers are shown on the bottom of the switch.

**DRR7016C  
DRR7116C****Right Angle**

Terminal numbers are shown on the bottom of the switch.

## ● Real code Actuator color : Yellow

Part No.	Position	Terminal #			
		1	2	4	8
DRS7010C DRR7010C	0				
	1	●			
	2		●		
	3	●	●		
	4			●	
	5	●		●	
	6		●	●	
	7	●	●	●	
	8				●
	9	●			●

## ● Complementary code Actuator color : Red

Part No.	Position	Terminal #			
		1	2	4	8
DRS7110C DRR7110C	0	●	●	●	●
	1		●	●	●
	2	●		●	●
	3			●	●
	4	●	●		●
	5		●		●
	6	●			●
	7				●
	8	●	●	●	
	9		●	●	

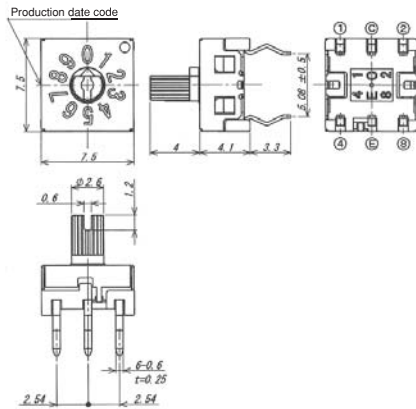
## ● Real code Actuator color : Yellow

Part No.	Position	Terminal #			
		1	2	4	8
DRS7016C DRR7016C	0				
	1	●			
	2		●		
	3	●	●		
	4			●	
	5	●		●	
	6		●	●	
	7	●	●	●	
	8				●
	9	●			●
	A		●		●
	B	●	●		●
	C			●	●
	D	●		●	●
	E		●	●	●
	F	●	●	●	●

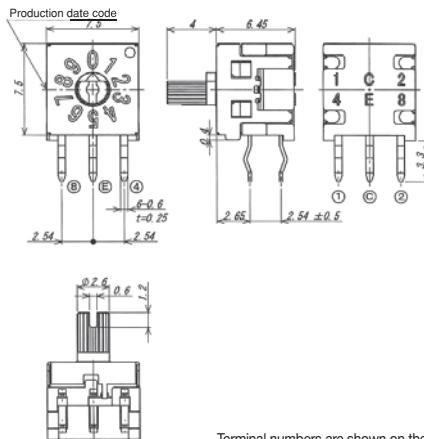
## ● Complementary code Actuator color : Red

Part No.	Position	Terminal #			
		1	2	4	8
DRS7116C DRR7116C	0	●	●	●	●
	1		●	●	●
	2	●		●	●
	3			●	●
	4	●	●		●
	5		●		●
	6	●			●
	7				●
	8	●	●	●	
	9		●	●	
	A	●		●	
	B			●	
	C	●	●		
	D		●		
	E	●			
	F				

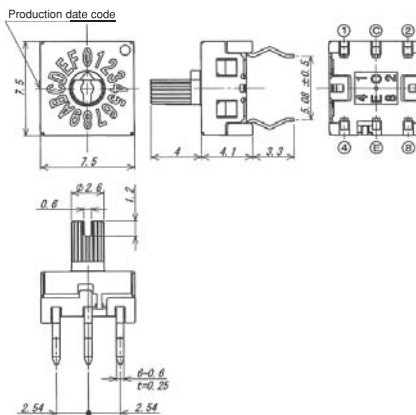
Ⓔ : Terminal E is ground terminal ●...Connection to common (C).

**Washable DRS•DRR8000C****DRS8010C  
DRS8110C****Straight**

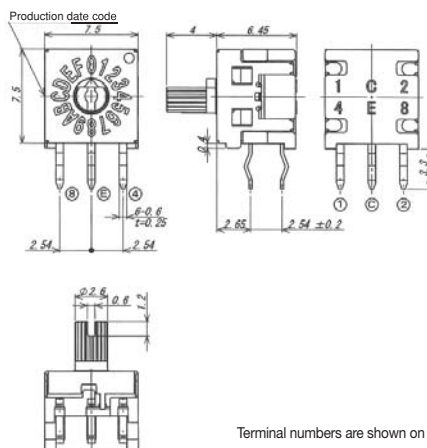
Terminal numbers are shown on the bottom of the switch.

**DRR8010C  
DRR8110C****Right Angle**

Terminal numbers are shown on the bottom of the switch.

**DRS8016C  
DRS8116C****Straight**

Terminal numbers are shown on the bottom of the switch.

**DRR8016C  
DRR8116C****Right Angle**

Terminal numbers are shown on the bottom of the switch.

## ● Real code Actuator color : Yellow

Part No.	Position	Terminal #			
		1	2	4	8
DRS8010C DRR8010C	0				
	1	●			
	2		●		
	3	●	●		
	4			●	
	5	●		●	
	6		●	●	
	7	●	●	●	
	8				●
	9	●			●

## ● Complementary code Actuator color : Red

Part No.	Position	Terminal #			
		1	2	4	8
DRS8110C DRR8110C	0	●	●	●	●
	1		●	●	●
	2	●		●	●
	3			●	●
	4	●	●		●
	5		●		●
	6	●			●
	7				●
	8	●	●	●	
	9		●	●	

## ● Real code Actuator color : Yellow

Part No.	Position	Terminal #			
		1	2	4	8
DRS8016C DRR8016C	0				
	1	●			
	2		●		
	3	●	●		
	4			●	
	5	●		●	
	6		●	●	
	7	●	●	●	
	8				●
	9	●			●
	A		●		●
	B	●	●		●
	C			●	●
	D	●		●	●
	E		●		●
	F	●	●	●	●

## ● Complementary code Actuator color : Red

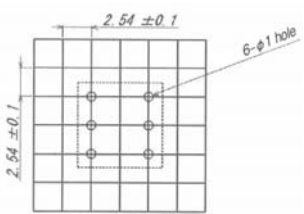
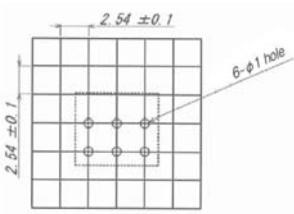
Part No.	Position	Terminal #			
		1	2	4	8
DRS8116C DRR8116C	0	●	●	●	●
	1		●	●	●
	2	●		●	●
	3			●	●
	4	●	●		●
	5		●		●
	6	●			●
	7				●
	8	●	●	●	
	9		●	●	
	A	●		●	
	B			●	
	C	●	●		
	D		●		
	E	●			
	F				

Ⓔ : Terminal E is ground terminal

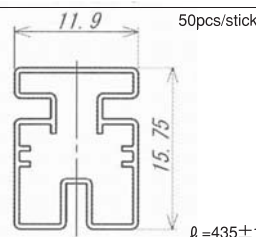
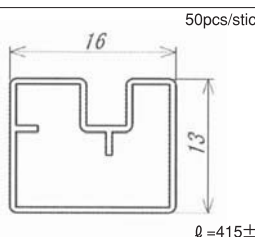
●...Contact closed

**DRS•DRR7000C/8000C****Washable****PCB Footprints**

(Top view)

Terminal style	PC Straight	Right Angle
Footprint dimensions		

**Packaging Specifications**

Series	DRS7000C/8000C	DRR7000C/8000C
Stick-Tube Specifications		

※ Order in 50 piece increments.

**Soldering Specifications**

- (1) Manual Soldering  
350°C, 3 sec. Max
- (2) Wave Soldering  
Immerse the switch two times for the portion from the front end of terminal to the back side of PCB for 5 to 6 seconds in the 260±3°C soldering pot.

**Flux Cleaning**

After soldering, wait until the switches cool down to room temperature (30°C or below) before washing. If the switches are cleaned while still above 30°C, a vacuum will occur which will cause the cleaning solution to be sucked into the switches.

**Switch Operation**

Use a screwdriver for setting position of the actuator.