

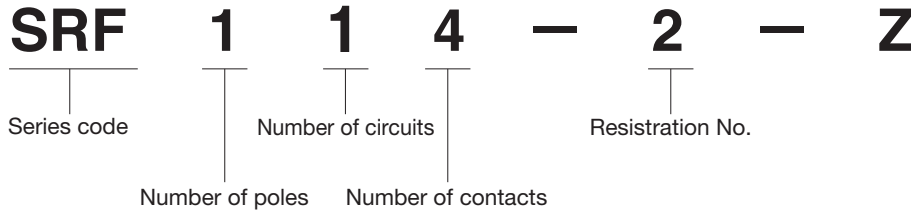
# SRF

## Miniature Rotary Switches

RoHS Compliant



### Part Numbering



### Standard Accessories

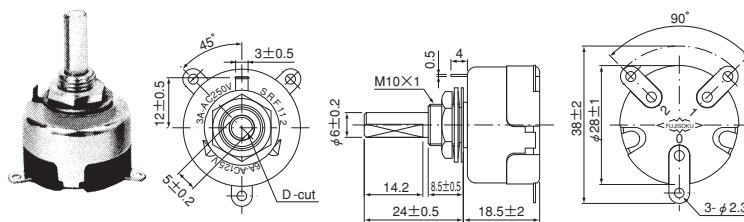
《Supplied with switch》

Part Name	Hex Nut	Lockwasher	Washer
Part No.	① 140008010240	② 140008030056	③ 140008020009
Dimensions			
Finish	—	Zinc plated	Nickel plated

### ★Combinations of Accessories

Part No.	Accessories		
	①	②	③
SRF112	○	○	○
SRF113	○	○	○
SRF114-2	○	○	

### ☆SRF112-Z 1-pole 2-position



Terminal numbers are shown on the bottom of the switch.

Shaft stop positions	Terminal connecting common(c)		Circuit diagram	Number of step	Step angle
	1	2			
1	○			1	90°
2		○			

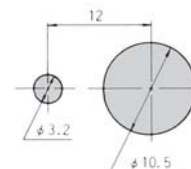
● The circuit diagrams show the switches as viewed from the terminal side with the shaft fully turned in the counterclockwise direction.

Rating	Initial contact resistance	Dielectric strength	Insulation resistance	Electrical life	
SRF112-Z	AC125V 6A AC250V 3A	20mΩ Max. (DC2~4V 1A)	AC1500V 1 minute	100MΩ Min. (DC500V)	10,000 cycles

● Ratings are based on resistance load.

### ■ Panel Cut-Out Dimensions

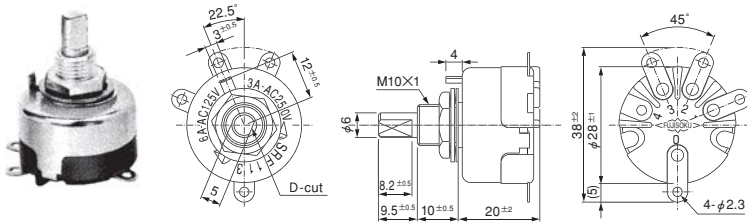
Panel thickness : 3.5 mm max.



☆ : Semi-standard products.

**SRF**

**★SRF113-Z 1-pole 3-position**



Terminal numbers are shown on the bottom of the switch.

Shaft stop positions	Terminal connecting common(c)			Circuit diagram	Number of step	Step angle
	1	2	3			
1	○				2	45°
2		○				
3			○			

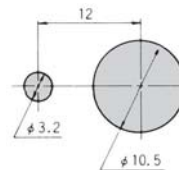
●The circuit diagrams show the switches as viewed from the terminal side with the shaft fully turned in the counter-clockwise direction.

Rating	Initial contact resistance	Dielectric strength	Insulation resistance	Electrical life
<b>SRF113-Z</b> AC125V 6A AC250V 3A	20mΩ Max. (DC2~4V 1A)	AC1500V 1 minute	100MΩ Min. (DC500V)	5,000 cycles

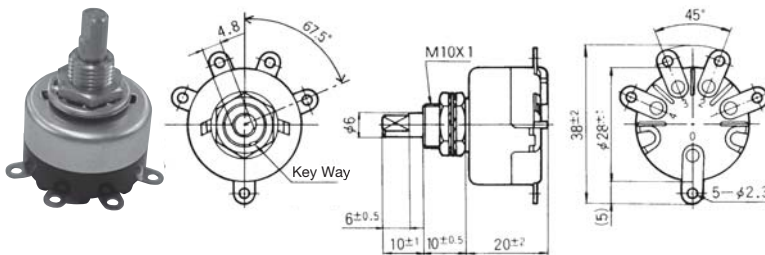
●Ratings are based on resistance load.

**■Panel Cut-Out Dimensions**

Panel thickness : 5 mm max.



**★SRF114-2-Z 1-pole 4-position**



Terminal numbers are shown on the bottom of the switch.

Shaft stop positions	Terminal connecting common(c)				Circuit diagram	Number of step	Step angle
	1	2	3	4			
1	○					3	45°
2		○					
3			○				
4				○			

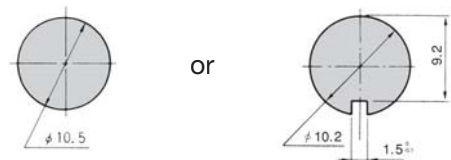
●The circuit diagrams show the switches as viewed from the terminal side with the shaft fully turned in the counter-clockwise direction.

Rating	Initial contact resistance	Dielectric strength	Insulation resistance	Electrical life
<b>SRF114-2-Z</b> AC125V 3A AC250V 1A	20mΩ Max. (DC2~4V 1A)	AC1500V 1 minute	100MΩ Min. (DC500V)	5,000 cycles

●Ratings are based on resistance load.

**■Panel Cut-Out Dimensions**

Panel thickness : 3 mm max.



**■Handling Precautions (SRF series)**

**1. Soldering Specifications**

(1)Manual Soldering

Device : Soldering iron

① 420°C, Max.; 3 seconds, Max.

**■Optional Accessory**

1. No dedicated knob is available for the SRF Series products.