



PO Series Piezoelectric switch



PO16-F4510Wx



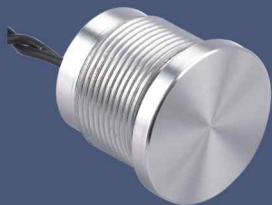
P016-L4510Wx



PO16-F1010Wx



PO16-L4510Wxyz



PO19-F3010Wx



P019-L3010Wx



PO19-F3010Wxyz



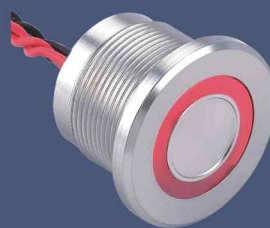
PO19-L3010Wxyz



PO22-F3010Wx



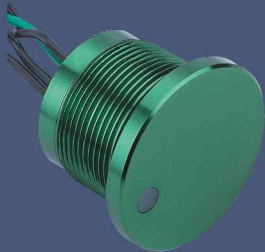
P022-L3010Wx



PO22-F4510Wxyz



PO22-L4510Wxyz



PO22-F3010WDxyz



P022-L4510WDxyz

Environmental specifications

- Sealing : IP68
- Vibration resistance : 10–500 Hz / 10 g
- Operating temperature : –40°C to +75°C

Electrical and general specifications

- Max. current/voltage rating : 1A 24VAC/DC or 200mA 24VAC/DC depending on version
- Switch resistance ON : 10 max.
- Switch resistance OFF : 5M min.
- Operating force : 2 to 6N
- Life expectancy : 50 million cycles
- LED consumption : Illuminated dot : 10mA – Illuminated ring : 20mA

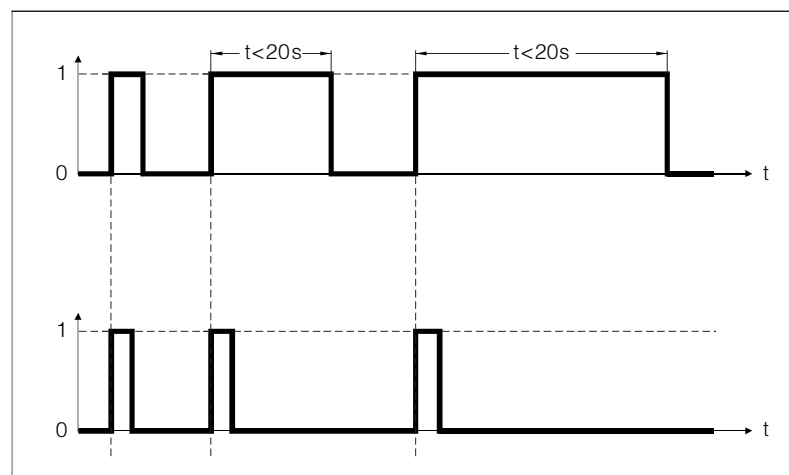
PS	16	★	□	□	◆	□	△	▲
Series	Mounting dimensions	Operator F45 Flat operator, height 4,5 F10 Flat operator, height 1.0 (non-illuminated) L45 With finger location, height 4,5 (non-illuminated)	Electrical function 10 NO (pulse)	Terminals W Lead (length 30mm) Other Lead length and connection mode can be customized.	Colours / Materials NT Natural anodized BU Blue anodized BK Black anodized GD Gold anodized RD Red anodized SS Stainless steel	Switch ratings 1 200mA 24VAC/DC	LED colour Blank Non-illum. R Red G Green Y Yellow O Orange B Blue W White	Lamp voltage Blank Non-illum. 05 Standard ring – 5VDC 12 Standard ring – 12VDC 24 Standard ring – 24VDC

PO	19	★	□	□	◆	□	△	▲
Series	Mounting dimensions	Operator F30 flat operator, height 3.0 L30 with finger location, height 3.0	Electrical function 10 NO (pulse)	Terminals W Lead (length 30mm) Other Lead length and connection mode can be customized.	Colours / Materials NT Natural anodized BU Blue anodized BK Black anodized GD Gold anodized RD Red anodized SS Stainless steel	Ratings 1 200mA 24VAC/DC	LED colour Blank Non-illum. R Red G Green Y Yellow O Orange B Blue W White	Lamp voltage Blank Non-illum. 05T thin ring – 5VDC 12T thin ring – 12VDC 24T thin ring – 24VDC 05L large ring – 5VDC 12L large ring – 12VDC 24L large ring – 24VDC

PO	22	★	□	□	◆	□	△	▲
Series	Mounting dimensions	F30 Flat operator, height 3.0 (Not available with large illuminated ring.) L30 With finger location, height 3.0, (Not available with illuminated ring.) F45 Flat operator, height 4.5 (Available with large illuminated ring only.)	Electrical function 10 NO (pulse)	Terminals W Lead (length 30mm) Other Lead length and connection mode can be customized.	Colours / Materials NT Natural anodized BU Blue anodized BK Black anodized GD Gold anodized RD Red anodized SS Stainless steel	Ratings 1 200mA 24VAC/DC	LED colour Blank Non-illum. R Red G Green Y Yellow O Orange B Blue W White	Lamp voltage Blank Non-illum. 05T thin ring – 5VDC 12T thin ring – 12VDC 24T thin ring – 24VDC 05L large ring – 5VDC 12L large ring – 12VDC 24L large ring – 24VDC 05D dot – 5VDC 12D dot – 12VDC 24D dot – 24VDC

Finger pressure applied to switch

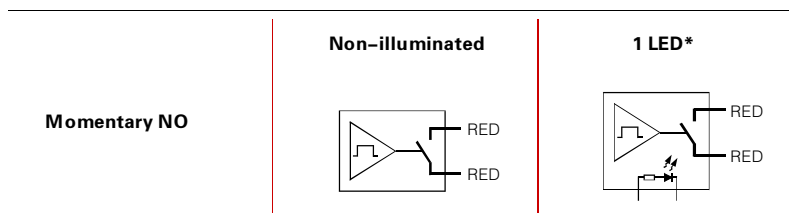
1 = pressure
0 = no pressure



Output

– Momentary NO (pulse)
No external power supply required

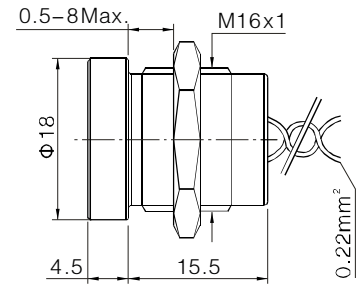
Wiring diagrams



Non-illuminated, operator height 4.50mm, flat



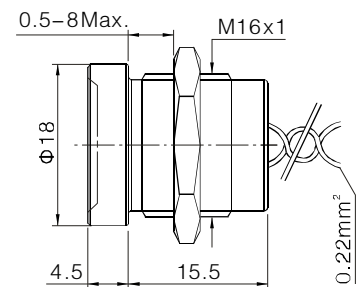
PO16-F4510Wx



Non-illuminated, operator height 4.50mm, with finger location



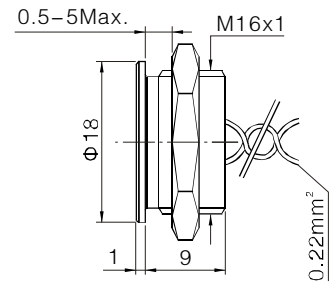
PO16-L4510Wx



Non-illuminated, operator height 1mm, flat



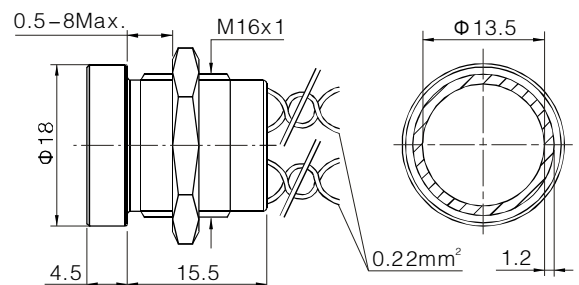
PO16-F1010Wx



With standard illuminated ring, operator height 4.50mm, flat



PO16-F4510Wxyz

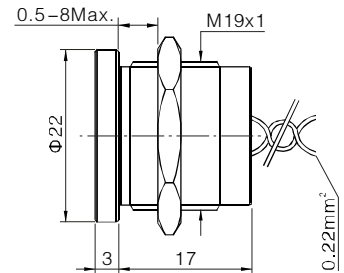


x	y	z
Colours / Materials	LED colour	Lamp voltage
NT Natural anodized	Blank Non-illum.	Blank Non-illum.
BU Blue anodized	R Red	05 Standard ring - 5VDC
BK Black anodized	G Green	12 Standard ring - 12VDC
GD Gold anodized	Y Yellow	24 Standard ring - 24VDC
RD Red anodized	O Orange	
SS Stainless steel	B Blue	
	W White	

Non-illuminated – operator height 3mm, flat



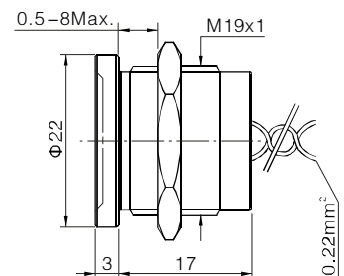
PO19-F3010Wx



Non-illuminated – operator height 3mm, with finger location



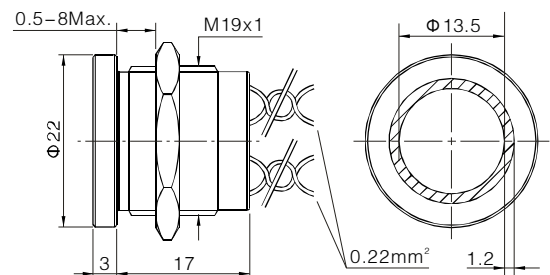
PO19-L3010Wx



With thin illuminated ring, operator height 3mm, flat



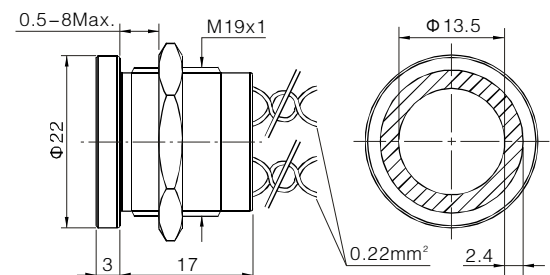
PO19-F3010Wxyz



With large illuminated ring, operator height 3 mm, with chamfer



PO19-L3010Wx

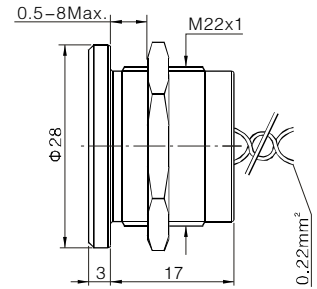


x	y	z
Colours / Materials	LED colour	Lamp voltage
Colours / Materials	Blank Non-illum.	Blank Non-illum.
NT Natural anodized	R Red	05T thin ring – 5VDC
BU Blue anodized	G Green	12T thin ring – 12VDC
BK Black anodized	Y Yellow	24T thin ring – 24VDC
GD Gold anodized	O Orange	05L large ring – 5VDC
RD Red anodized	B Blue	12L large ring – 12VDC
SS Stainless steel	W White	24L large ring – 24VDC

Non-illuminated, operator height 3 mm, flat



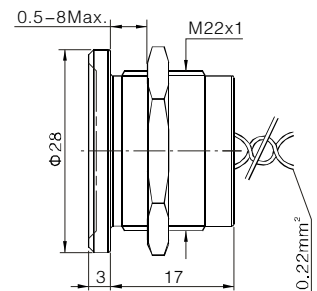
PO22-F3010Wx



Non-illuminated, operator height 3 mm, with finger location



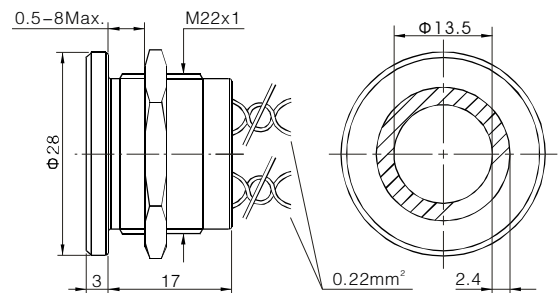
PO22-L3010Wx



With thin illuminated ring – operator height 4,50, flat



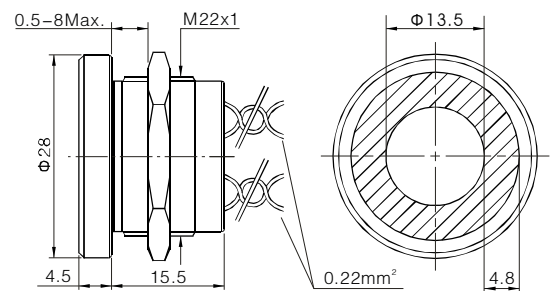
PO22-F4510Wxyz



With large illuminated ring, operator height 4,50, flat

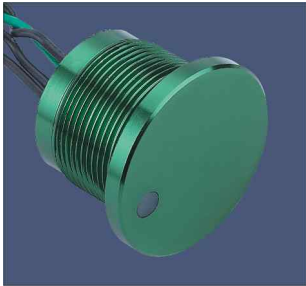


PO22-L4510Wxyz

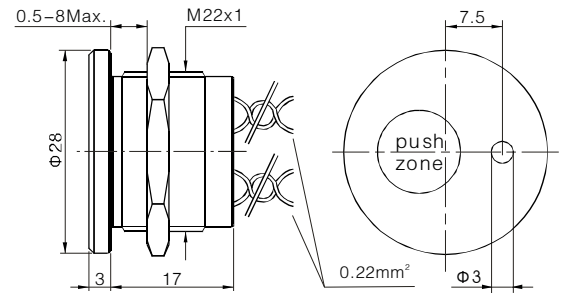


x	y	z	
Colours / Materials	LED colour	Lamp voltage	
NT Natural anodized	Blank Non-illum.	Blank Non-illum.	
BU Blue anodized	R Red	05D dot – 5VDC	05L large ring – 5VDC
BK Black anodized	G Green	12D dot – 12VDC	12L large ring – 12VDC
GD Gold anodized	Y Yellow	24D dot – 24VDC	24L large ring – 24VDC
RD Red anodized	O Orange	05T thin ring – 5VDC	
SS Stainless steel	B Blue	12T thin ring – 12VDC	
	W White	24T thin ring – 24VDC	

With illuminated dot, operator height 3 mm, flat



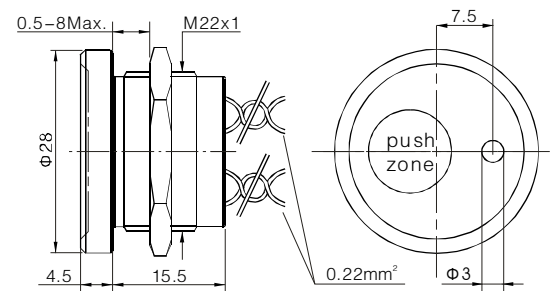
PO22-F3010WDxyz



With illuminated dot, operator height 4.50 mm, with finger location



PO22-L4510WDxyz



x	y	z	
Colours / Materials	LED colour	Lamp voltage	
NT Natural anodized	Blank Non-illum.	Blank Non-illum.	
BU Blue anodized	R Red	05D dot – 5VDC	05L large ring – 5VDC
BK Black anodized	G Green	12D dot – 12VDC	12L large ring – 12VDC
GD Gold anodized	Y Yellow	24D dot – 24VDC	24L large ring – 24VDC
RD Red anodized	O Orange	05T thin ring – 5VDC	
SS Stainless steel	B Blue	12T thin ring – 12VDC	
	W White	24T thin ring – 24VDC	