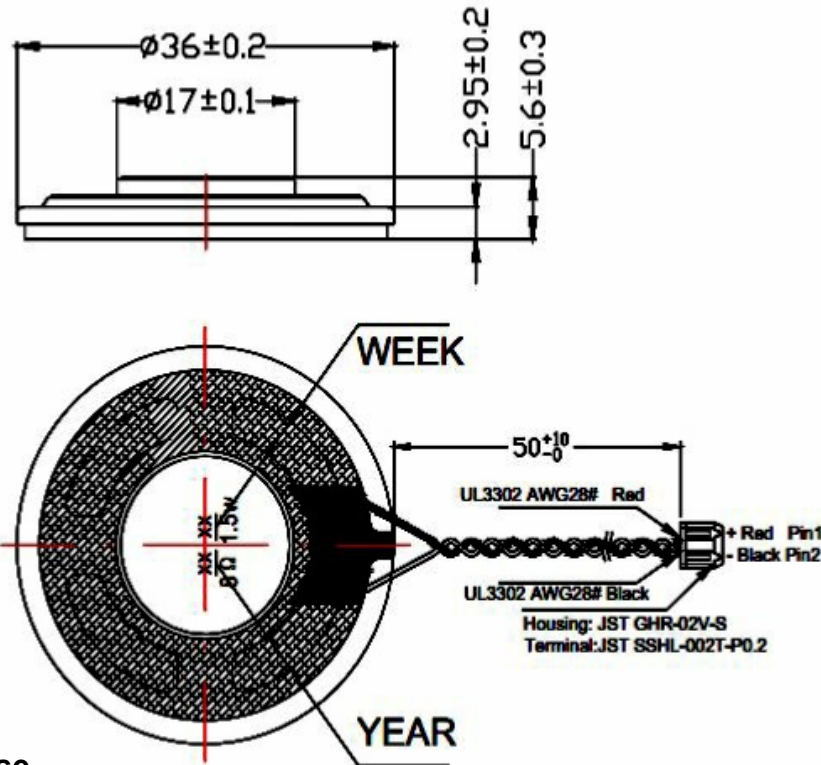
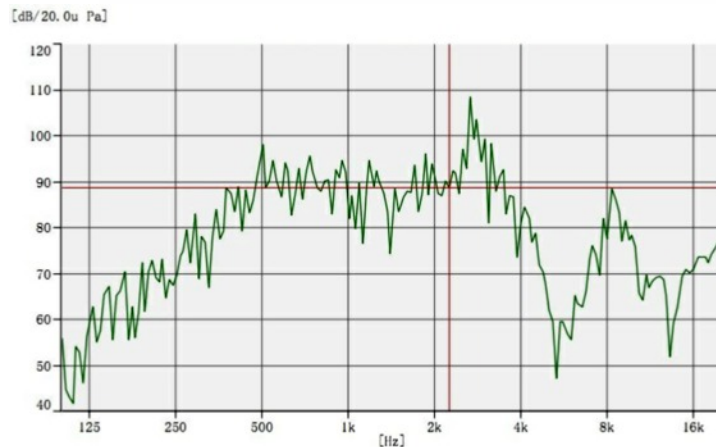


Dimension



Frequency response



Speaker

■ CA-SM3642C

Specification

Dimension (mm)	Ø36
Rated Input Power (W)	1,5
Max. Input Power (W)	2
Impedance (Ω)	$8 \pm 15\%$
S.P.L. (dB)	92 ± 3
Frequency Range (Hz)	F0 ~ 4000
Reson. Frequency Fo (Hz)	$550 \pm 20\%$
Operating Temperature (°C)	-40 to + 85
Storage Temperature (°C)	-40 to + 85